

WL(T)68 Stuck In Standby

Problem

- Won't come out of standby when cold (RED LIGHT ON).
Then fault progresses to stuck in standby all the time.

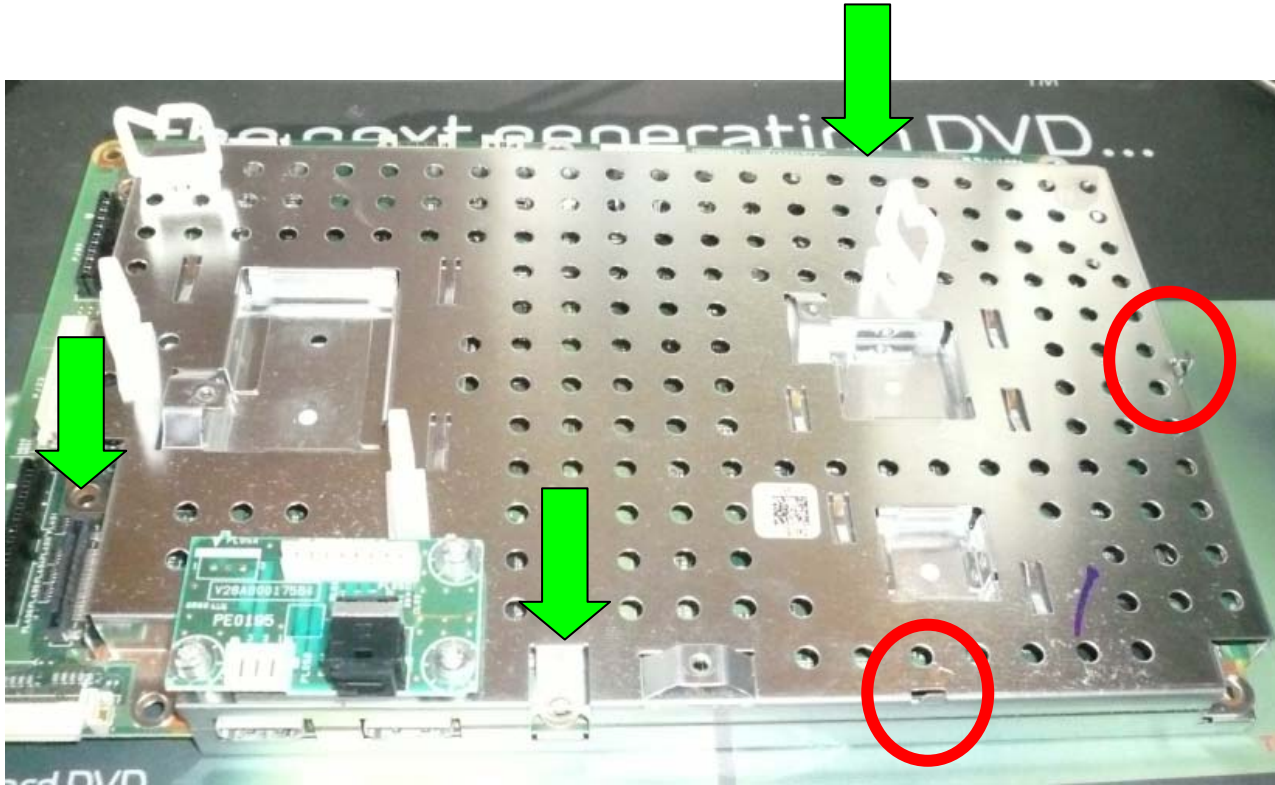
Cause

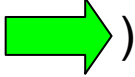

- DDR 2.5V rail missing from Cortex IC preventing boot up

Cure

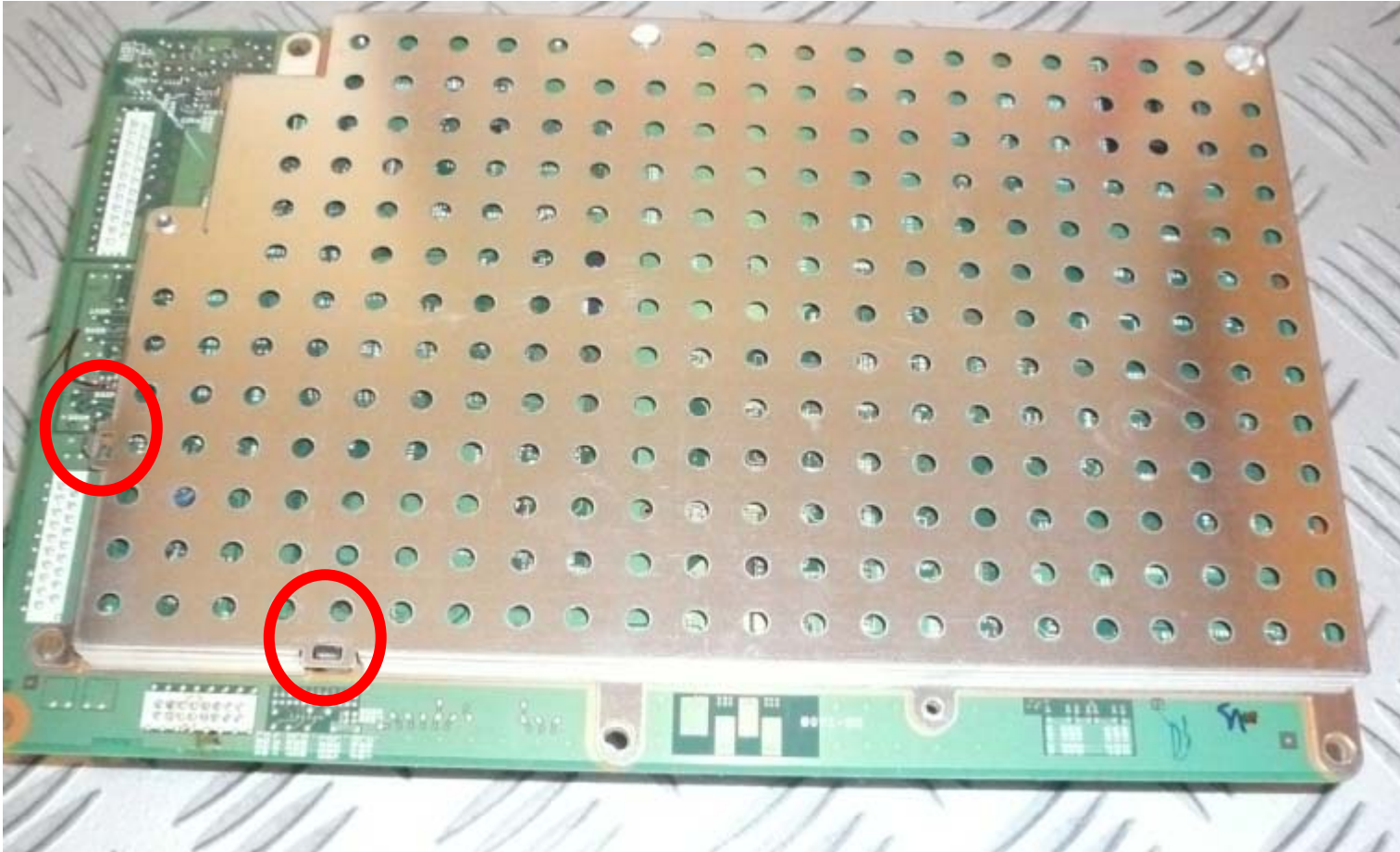
- Re-solder IC420 MP2105DJ-LF-Z on Signal Processing board.
Using lead free solder.


WL(T)68 Stuck In Standby



1. Remove Signal PCB
2. Remove 3 screws from screening can (Shown by )
3. Unfold securing lugs (Show by )

WL(T)68 Stuck In Standby



4. Unfold securing lugs (Show by )

WL(T)68 Stuck In Standby



5. Remove the top Shield and then the bottom shield

NOTE : There are 3 heat sinks that are clipped onto the shield which may be stuck on the 3 processing IC's These must be fitted when re assembling after repair

